

# TCP/IP Setup Utility Manual

## LK-B Series

SEWOO Label Printer

Rev. 2.00

### Table of Contents

1. Explanation.
2. How to use.
  - 2.1 TCP/IP Configuration.
  - 2.2 Ethernet firmware update.

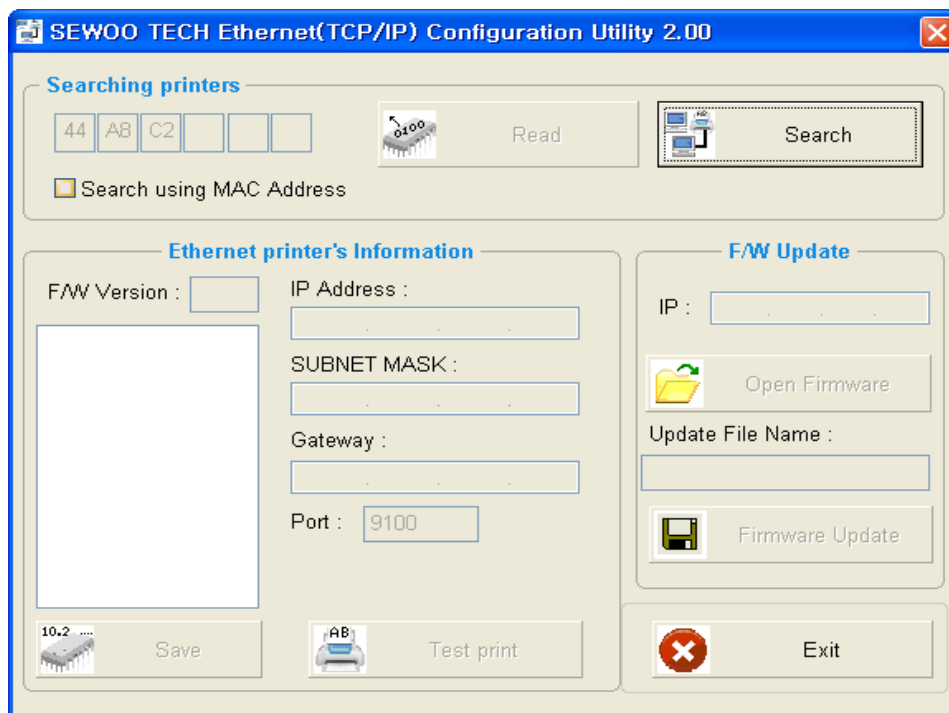
## 1. Explanation.

This TCP/IP Setup Utility Manual shows how to find the printer which is connected to the network and set the TCP/IP information of the printer.

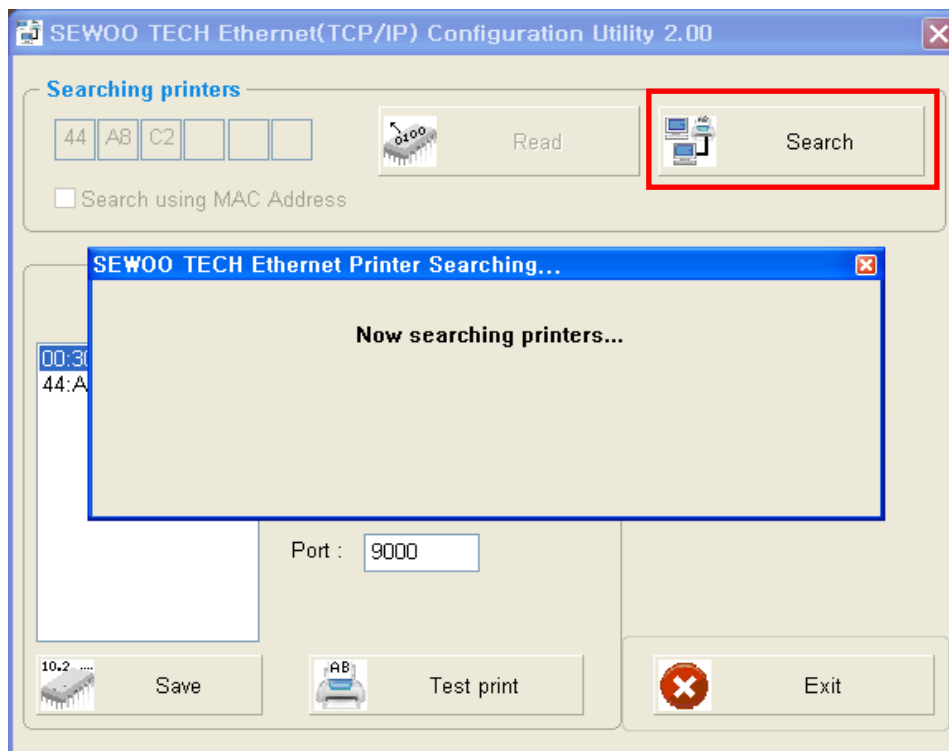
## 2. How to use.

### 2.1 TCP/IP configuration.

Execute the TCPIPConfig.exe file.



Click the "Search" button.

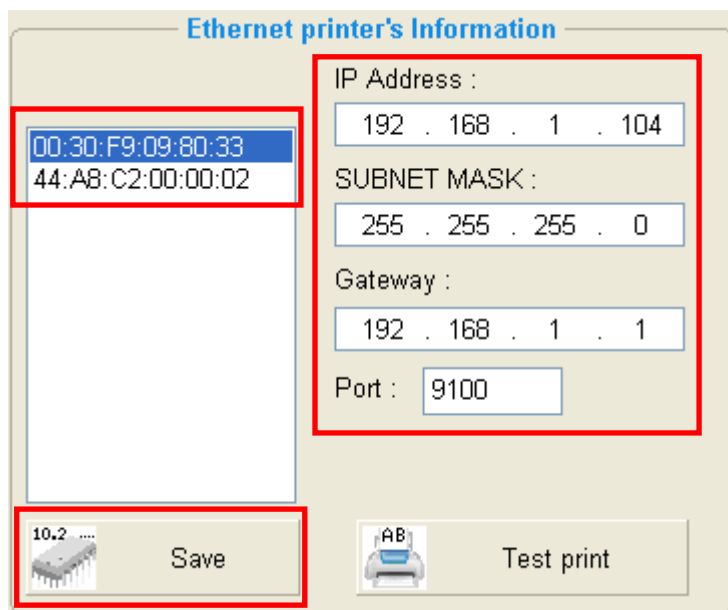


Two printer types(ATMEL & STM CPU) support different UI.

So choose the printer type on the left and enter the setup information on the right of the utility.

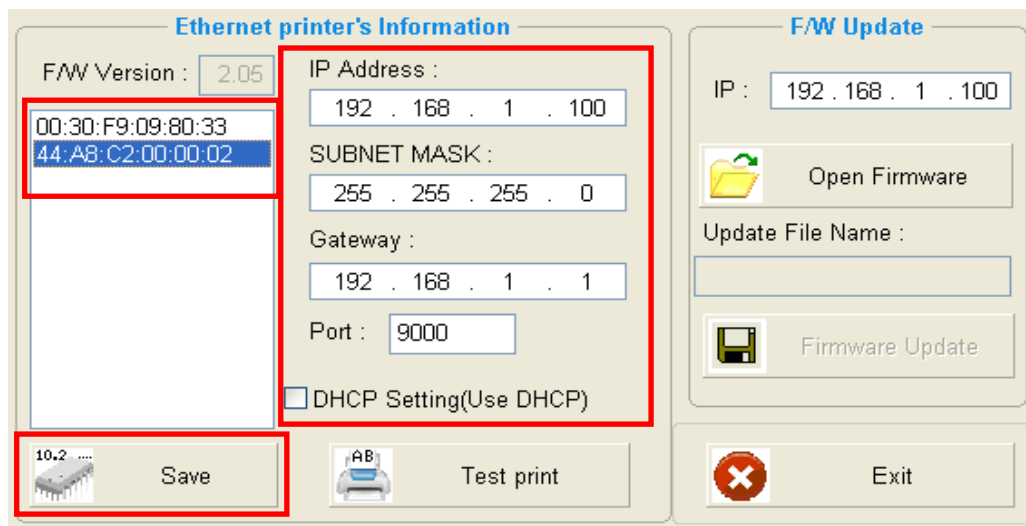
After entering setup information, click “Save” button.

<ATMEL CPU> [MAC Address : 00:30:F9:XX:XX:XX]



The screenshot shows the 'Ethernet printer's Information' utility for an ATMEL CPU. On the left, there is a list of MAC addresses: '00:30:F9:09:80:33' (highlighted in blue) and '44:A8:C2:00:00:02'. Below this list is a '10.2' icon and a 'Save' button. On the right, there are input fields for 'IP Address' (192 . 168 . 1 . 104), 'SUBNET MASK' (255 . 255 . 255 . 0), 'Gateway' (192 . 168 . 1 . 1), and 'Port' (9100). A 'Test print' button with a printer icon is also present.

<STM CPU> [MAC Address : 44:A8:C2:XX:XX:XX]



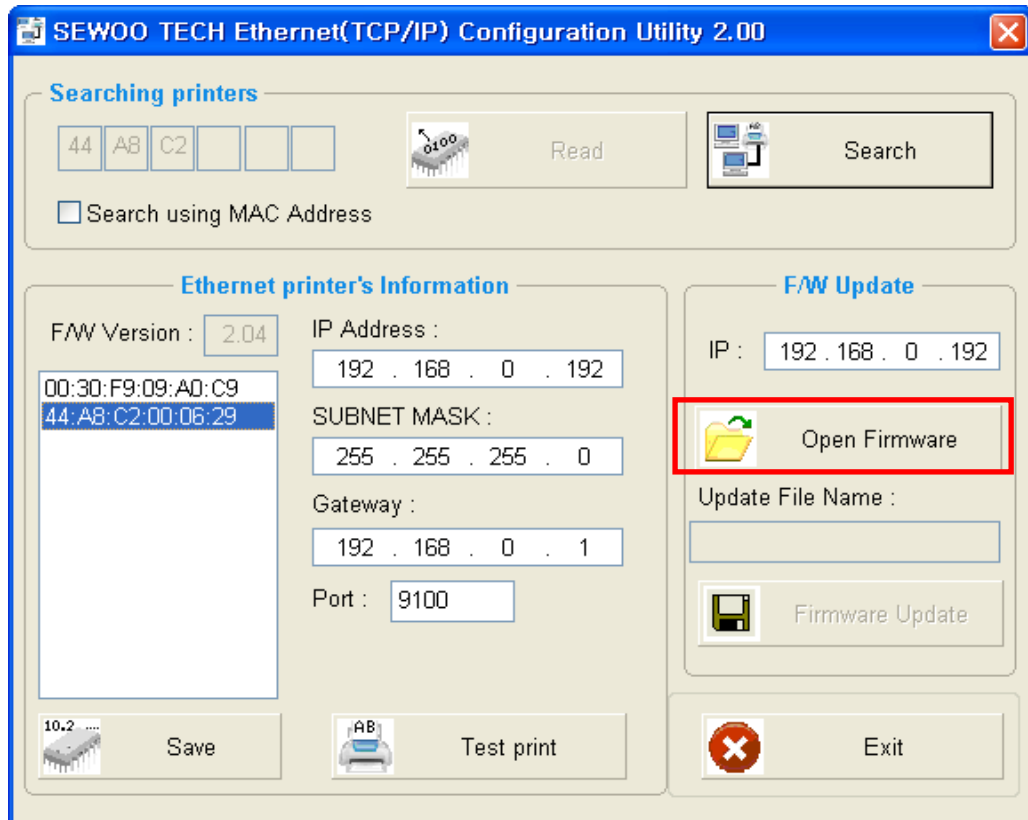
The screenshot shows the 'Ethernet printer's Information' utility for an STM CPU. On the left, there is a 'F/W Version' dropdown set to '2.05'. Below it is a list of MAC addresses: '00:30:F9:09:80:33' and '44:A8:C2:00:00:02' (highlighted in blue). Below this list is a '10.2' icon and a 'Save' button. On the right, there are input fields for 'IP Address' (192 . 168 . 1 . 100), 'SUBNET MASK' (255 . 255 . 255 . 0), 'Gateway' (192 . 168 . 1 . 1), and 'Port' (9000). There is also a checkbox for 'DHCP Setting(Use DHCP)'. A 'Test print' button with a printer icon is present. On the far right, there is a 'F/W Update' section with an 'IP' field (192 . 168 . 1 . 100), an 'Open Firmware' button with a folder icon, an 'Update File Name' field, a 'Firmware Update' button with a floppy disk icon, and an 'Exit' button with a red 'X' icon.

When you see the dialog message as below, click “OK” button.

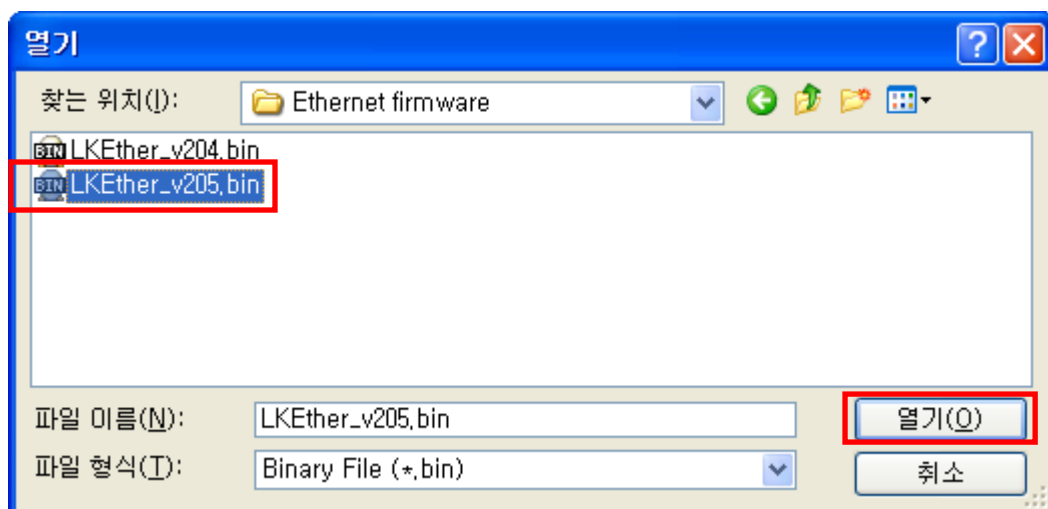


## 2.2 Ethernet Firmware update.

Click “Open Firmware” button.”



Choose the firmware which you want to upload and click “Open” Button.



Click Firmware Update” Button and when the firmware uploading is completed you could see the below dialog message.

Click “OK” Button..

